

Highways

Highways Commissioning
Block 5, 6th Floor East
Shire Hall
Gloucester GL1 2TH

08000 514 514

AshDieback@gloucestershire.gov.uk

Our Ref: 11388585
Wednesday, November 30, 2022

Ash Dieback

Dear Sir/Madam

What: Temporary Traffic Order to **close the road** for essential Ash Dieback tree work.
Where: A40 from A429 Crossroads to A361 Burford Crossroads
(see overleaf for details of the exact location)
When: **12th December to 20th December 2022**
(excluding weekends) from 09:30 to 15:30 daily.

On behalf of Gloucestershire County Council, we will shortly be carrying out essential works at the above location to remove unsafe trees infected with Ash Dieback.

Ash Dieback disease causes Ash trees to become unsafe, and the tree could shed limbs or collapse on to the road causing harm and injury. This work must take place for health and safety reasons, to protect road users and pedestrians, and make sure the carriageway remains clear of debris.

ROAD CLOSURE

We will be carrying out essential tree works at the above location for health and safety reasons to protect users of highways and county council land as part of our Ash Dieback project. To ensure the safety of you and our work force we have, under Sections 14, 15 & 16 of the Road Traffic Act 1984 as amended, made a Temporary Traffic Order to **close the road**.

Due to the type of activities required with tree felling and maintenance works, the road closure can cover an area greater than where work is taking place. This is to allow safe movement and placement of machinery and material.

We appreciate road closures are inconvenient, but it is necessary to keep you and the team working on the road safe. We have planned the work so we can be in and out as quickly as possible and have tried to do it at a time that will minimise any inconvenience.

ACCESS

In accordance with the Temporary Traffic Order, we are not permitted to allow any person or vehicle to proceed along the closed roads; except for emergency vehicles or statutory undertakers responding to an emergency. We will endeavor to always keep the public foot path open, if it is necessary to close it at any point it will be for a limited time and fully supervised by our trained banks man.

***During this period, 12th December to 20th December 2022 inclusive, there will be NO through access to and from Burford from the A429 Crossroads along the A40. Essential Ash Dieback work is to be completed at 2 different identified areas along this route. At the closure...

Highways

...points our fully trained banks man will supervise for exceptional circumstances, such as local access for residents and deliveries. This will be on a case-by-case basis and only where it does NOT impact on our ability to carry out the work and where it is safe to do so. Any access during this time would be at the driver's own risk as it is a works site. Once on site, our workforce Supervisor will communicate with residents who are directly affected by the essential Ash Dieback works, within the designated work areas. Closure times are between 09:30 – 15:30 daily.

Therefore, if you normally drive into or out of this area during the hours when the road closure is in place, we ask you to please make alternative arrangements

In exceptional circumstances, some level of access may be considered. This will be on a case-by-case basis and only where it doesn't impact on our ability to carry out the work and where it is safe to do so. Any access during this time would be at the driver's own risk as it is a works site.

DIVERSIONS

We have created an official diversion route which will be signposted and is suitable for all vehicles that would normally use the **closed 'A' road**. We appreciate you may know an alternative route, however, please be aware alternative routes which are outside of the road closure area are used at driver's discretion and own risk. Below is a map showing the extents of the road closure.

Parking

If you usually park within the road closure, you will need to find alternative parking nearby during the hours the road is closed.

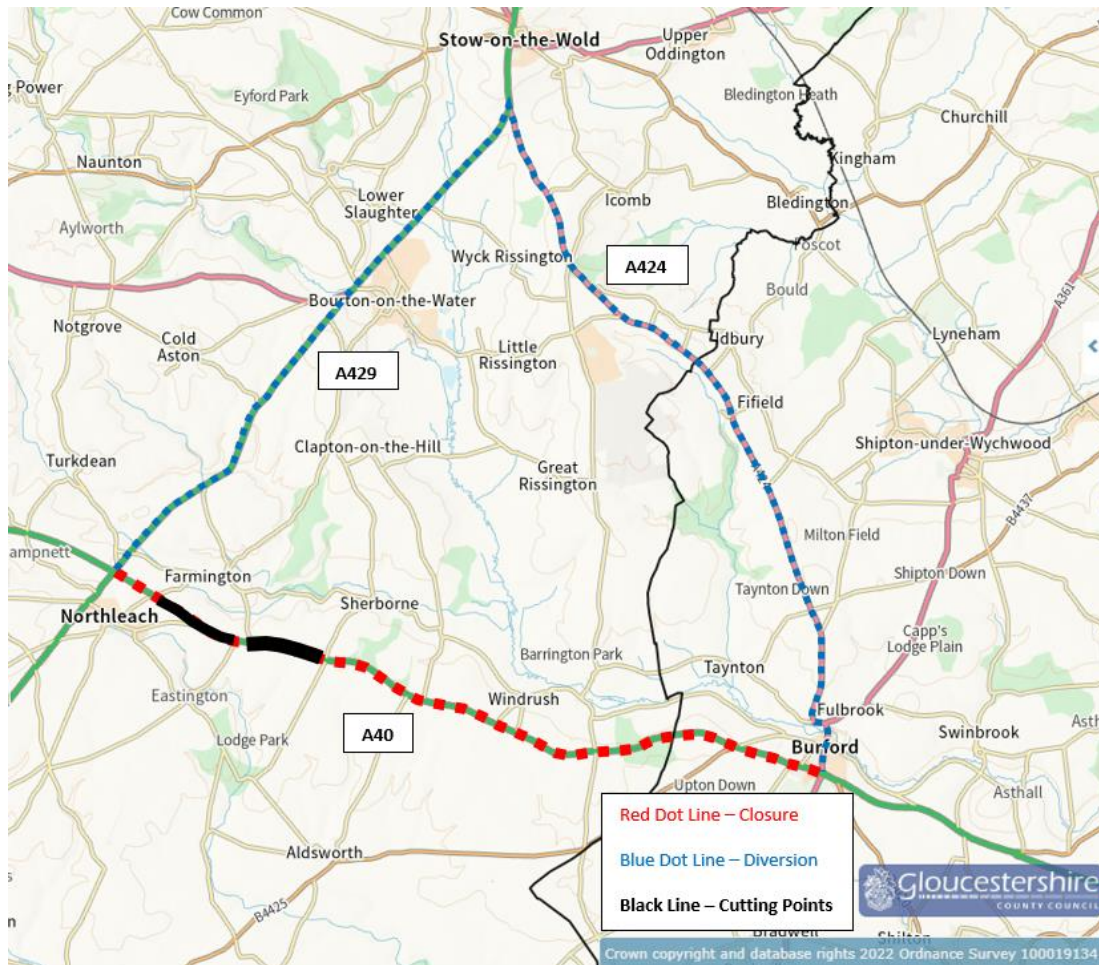
Contact us

If you have any queries, please refer to the Frequently Asked Questions leaflet delivered with this letter, contact us on 08000 514514 or email AshDieback@gloucestershire.gov.uk.

Thank you in advance for your patience and co-operation.

Kind Regards,
Liam Rudge
Highways Stakeholder and Relationship Management Officer
Environment, Economy and Infrastructure

Highways



Currently, works are planned for 4 days cutting on the Western cutting point, then 3 days cutting on the Eastern Cutting Point.
 Hard Closure points for Western Cutting Point between Farmington Road and road towards Eastington. For Eastern Cutting Point, between road towards Eastington and road towards Sherborne.